

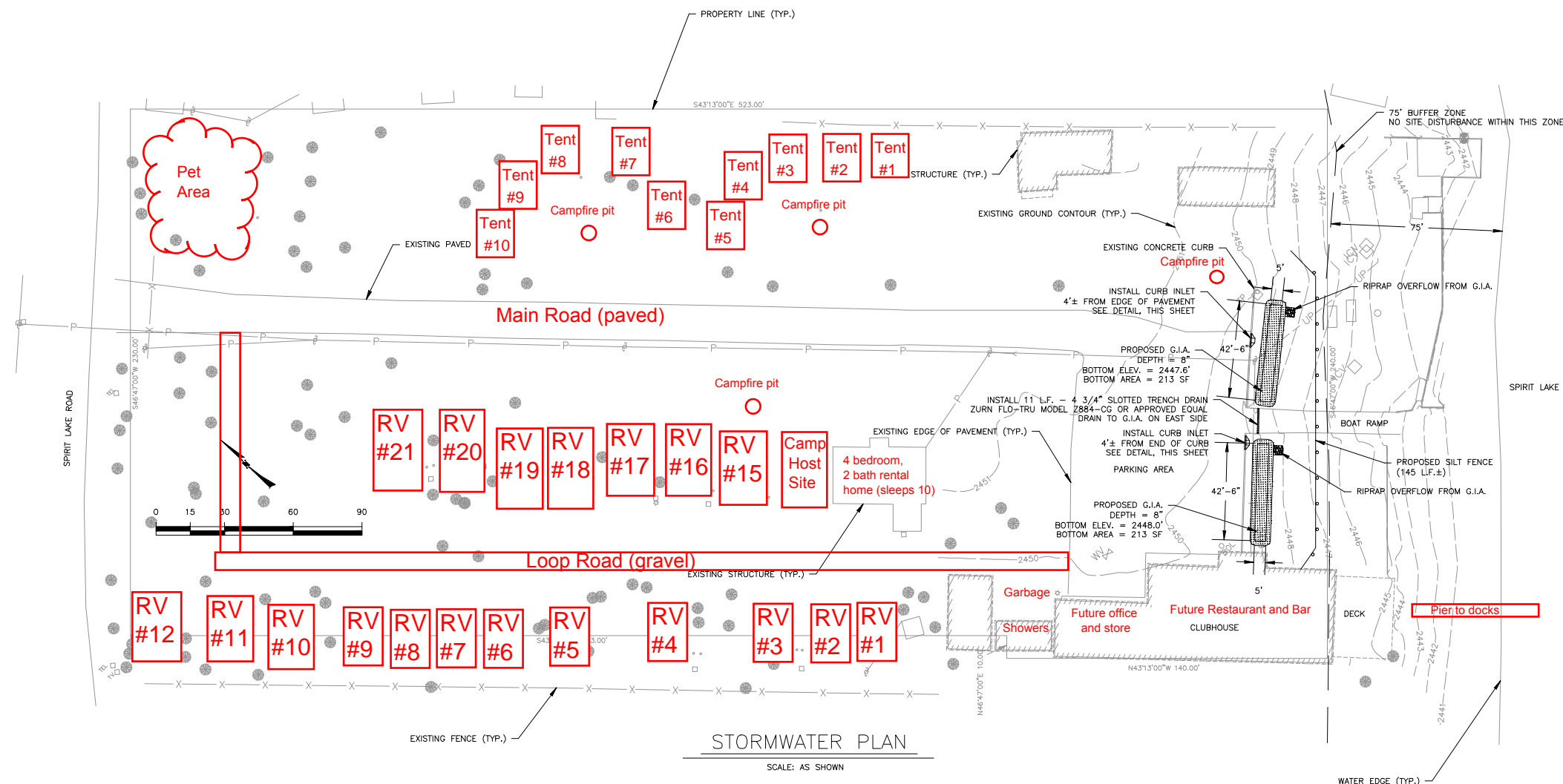
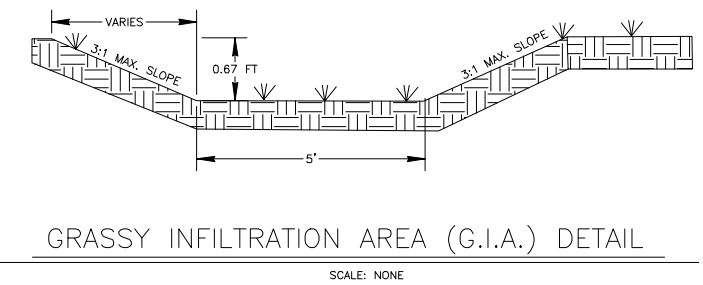
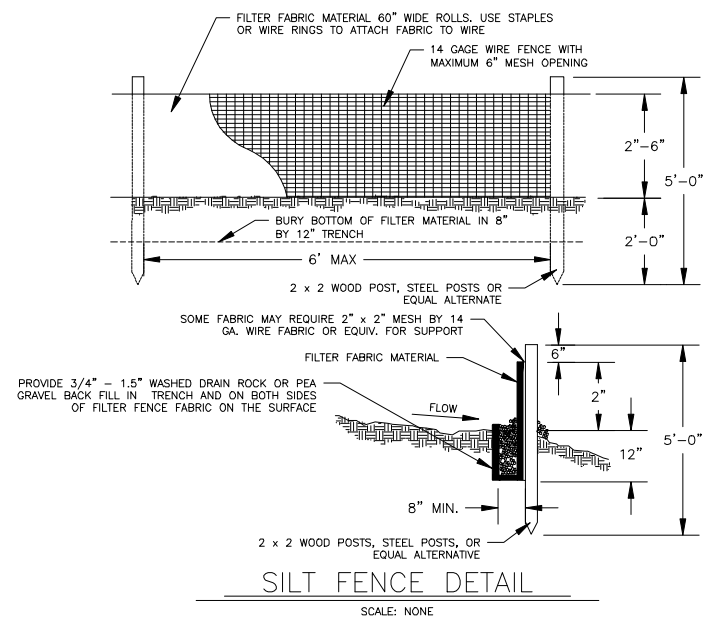
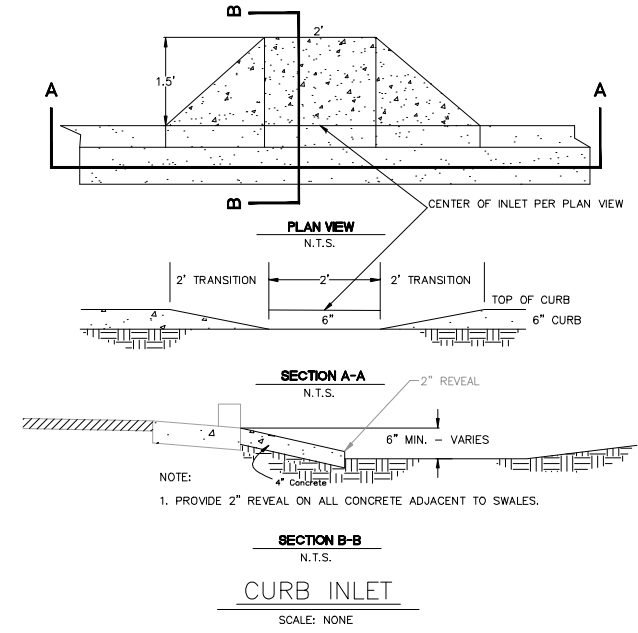


NO.	REVISIONS	DATE	E-FILE NAME				
			DESIGNED	DRAWN	CHECKED	APPROVED	SCM
			C-01-ST-STRM				

**T-O ENGINEERS**  
 CONSULTING ENGINEERS, SURVEYORS & PLANNERS  
 WEST 200 PRALINE AVENUE  
 COBURN, IDAHO 83415-7710  
 PHONE 208 765-3646 FAX 208 765-7006  
 BOB ALSTON BOBIE IDAHO CALDWELL IDAHO

**HURST PROPERTY**  
 PARCEL NO. 53N04W077430  
 STORMWATER MANAGEMENT PLAN  
 SPIRIT LAKE, ID

DATE: May 18, 2010  
 PROJECT: 10008  
 SHEET 1 OF 1



**GENERAL NOTES:**

1. ALL WORK SHALL CONFORM TO KOOTENAI COUNTY STANDARDS.
2. GRASSY INFILTRATION AREAS SHALL BE PROTECTED FROM SILTATION DURING INSTALLATION.
3. THE CONTRACTOR SHALL NOTIFY THE APPROPRIATE UTILITY COMPANY PRIOR TO STARTING WORK NEAR ANY FACILITIES. FOR EXISTING UTILITY LOCATIONS, CONTACT 1-800-428-4950 AT LEAST 48 HOURS PRIOR TO STARTING ANY EXCAVATIONS.
4. ALL SILT FENCE AND EROSION/SEDIMENTATION CONTROLS SHALL BE INSTALLED PRIOR TO ANY CONSTRUCTION.
5. ALL DISTURBED AREAS SHALL BE SEEDED AND MULCHED FOLLOWING FINAL GRADING.

**EROSION CONTROL:**

1. ALL PROPERTIES ADJACENT TO THE PROJECT SHALL BE PROTECTED FROM SEDIMENT DEPOSITION AND RUNOFF.
2. THE CONTRACTOR SHALL ENSURE THAT ALL PAVED AREAS ARE KEPT CLEAN FOR THE DURATION OF THE PROJECT.

**OPERATION AND MAINTENANCE**

1. GRASSY INFILTRATION AREAS SHALL BE INSPECTED SEMIANNUALLY AS A MINIMUM AND AFTER MAJOR STORM EVENTS.
2. SEDIMENT REMOVAL SHOULD BE CONDUCTED WHEN THE SEDIMENT IS DRY ENOUGH TO CRACK AND READILY SEPARATES FROM THE FLOOR OF THE BASIN.
3. GRASSY INFILTRATION AREAS THAT HAVE REACHED THE END OF THEIR USEFUL LIFE SHALL BE RENOVATED BY ANY NEEDED ACTION.

© 2010 T-O ENGINEERS. THIS INSTRUMENT IS THE PROPERTY OF T-O ENGINEERS. ANY REPRODUCTION, REUSE OR MODIFICATION OF THIS INSTRUMENT OR ITS CONTENTS WITHOUT SPECIFIC WRITTEN PERMISSION OF T-O ENGINEERS IS STRICTLY PROHIBITED.

S:\10008\Acadman\Sheets\Construction Set\10008-C-01-ST-STRM.dwg, 5/19/2010 11:13:59 AM, Bob, Try, DWG To PDF.pc3

NOTE: SURVEY DATA PROVIDED BY OTHERS. T-O ENGINEERS, INC. IS NOT RESPONSIBLE FOR THE ACCURACY OF THE SURVEY AND SHALL NOT BE HELD LIABLE FOR DESIGN AND CONSTRUCTION CONFLICTS CREATED BY INACCURATE SURVEY DATA.